

Corrance Road, Brixton, SW2

3 bedroom flat to let

£726 Per Week

Furnished

Property Details

Keating Estates are delighted to present this superb and spacious three-double-bedroom, split-level Victorian conversion with a private garden.

To the rear, a large L-shaped kitchen/reception room provides an excellent space for cooking, dining, and relaxing. Double doors open directly onto the well-maintained private garden, filling the room with natural light. The principal bedroom at the front of the property is warm and inviting, while the two additional double bedrooms are well proportioned. The main bathroom is modern and well equipped and the first-floor bedroom further benefits from its own en-suite.

Corrance Road is a popular residential street, ideally positioned between Brixton and Clapham. Residents enjoy easy access to the vibrant amenities of both areas, including the wide green spaces of Brockwell Park and Clapham Common, as well as the excellent cafés, restaurants, and cultural offerings of Clapham, Abbeville Village, and Brixton Village.

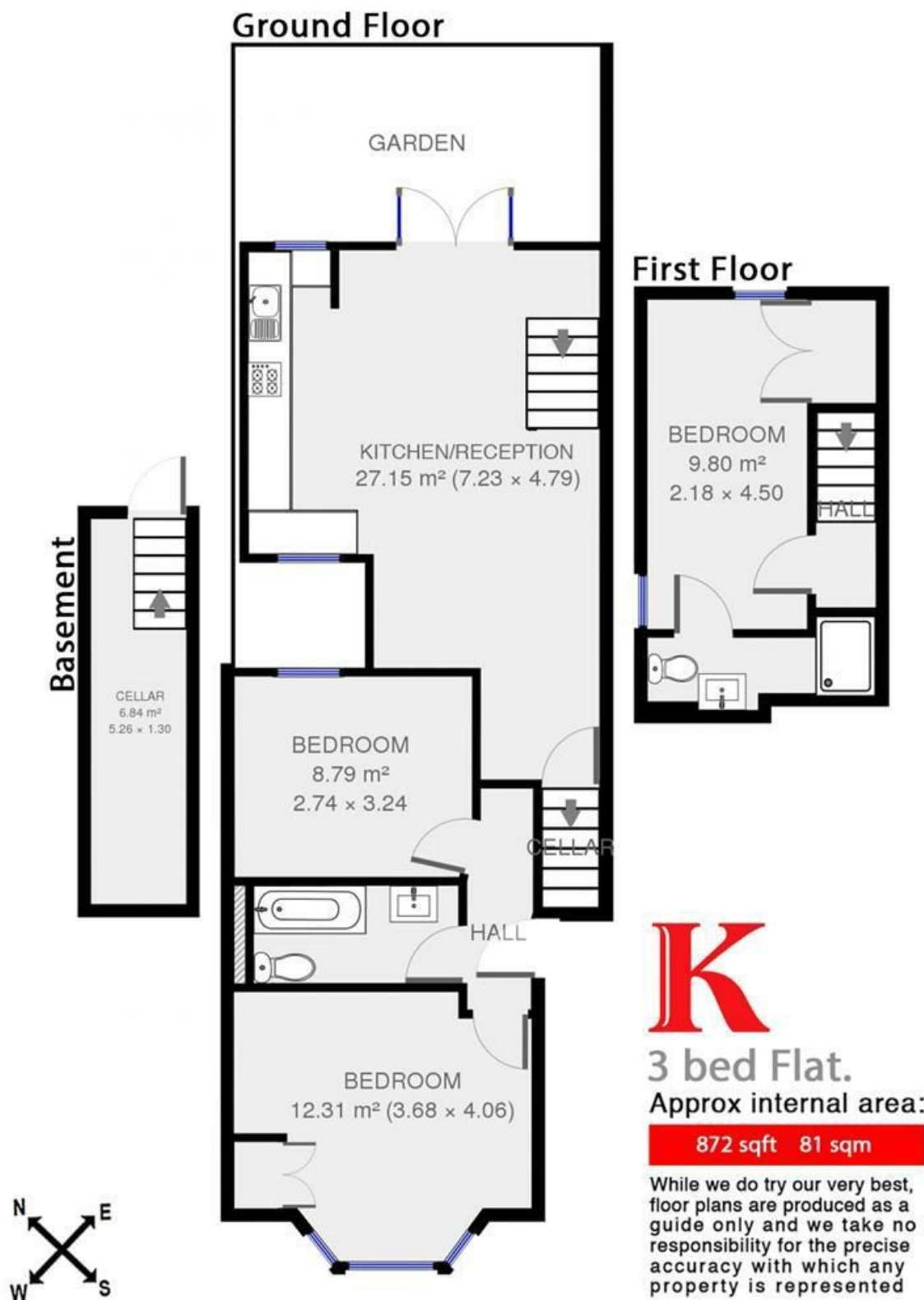
Features

- Private garden
- Bright and airy throughout
- Three double bedrooms
- Large open plan reception and kitchen area
- Family bathroom and en-suite
- Under a 13 minute walk to Brixton station
- Close to Brockwell park

Council tax band C **EPC rating D (65)**



Corrance Road



Corrance Road, Brixton, SW2

